

ECO.40/2



See icon guide on cover flap



40mm



13mm



45mm



12



1050 W



1500



150mm

High speed
gearing
Specially
designed for
twist drilling

With a touch of over-capacity, working is even more fun. The ECO.40 magnetic drilling machine has a powerful motor and can be mechanically adjusted to two rotational speeds.

Higher spindle speed makes this machine particularly suitable for twist drilling.



Shown extras
not included.

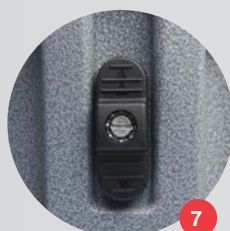
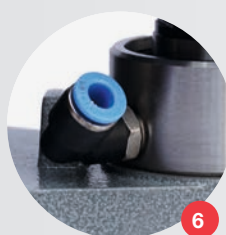
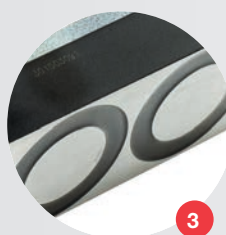
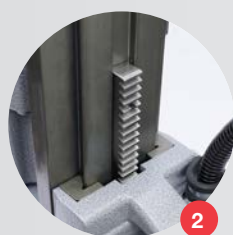
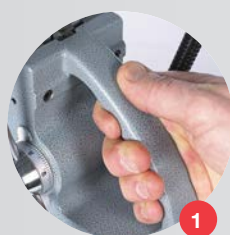


Features

- 2-speed gearbox
- Compact design
- Detachable spindle
- Practical long stroke
- Clear and easy controls

Technical data

Annular cutters	Ø 12 - 40 mm
Twist drills	Ø 1 - 13 mm
Countersinking	Ø up to 45 mm
Length	320 mm
Width	210 mm
Height	395 - 540 mm
Stroke	150 mm
Weight	12 kg
Magnet (l x w x h)	160 x 80 x 42 mm
Magnetic force	1500 kg
Motor power	1050 W
Total power	1100 W
Speed (no load)	(I) 720 min ⁻¹ (II) 1300 min ⁻¹
Speed (load 1050 W)	(I) 315 min ⁻¹ (II) 560 min ⁻¹
Spindle (Weldon)	3/4" (19,05 mm)
Voltage	110-120 / 220-240 V / 50-60 Hz



≤ Ø 40 mm
page: 70

≤ Ø 13 mm
page: 96

≤ Ø 45 mm
page: 95

accessories
page: 61



- 1 Ergonomic feed handle
- 2 High precision height adjustment:
Low maintenance, minimal wear
correction
- 3 Strong dual coil CNC machined magnet
- 4 Clear and easy controls
- 5 Detachable spindle
- 6 Integrated tool cooling
- 7 2-speed gearbox