

PIPE COLD CUTTING MACHINE

for heavy wall metal pipe and pipeline

- Extremely low weight pipe cutting machine
- Quick and safe clamping and set up of pipe cold cutter
- Most precise operation for pipe welding process
- Pipe cold cutting operation
- High productivity of cold cutter
- Perfect weld preparation
- No heat affected zone (HAZ) with cold cut



DLW



Perfect tooling



Low weight
split-frame



Strong inter-
changeable
motors

DESIGN AND DEVELOPMENT

DLW clamshell pipe cold cutter

Field of applications

The portable pipe cutting machine for steel pipe machining of pipes on-site is able to perform beveling and cutting of steel pipes as well as stainless steel and high alloyed steel pipes. The machines are reduced in weight and dimensions. The accessories allow multiple operations, like beveling and cutting in one operation, inside beveling, flange repair of flange facing. The clamshell pipe cutter is available from 3 - 57". The pipe cutter can do all kind of pipe weld preparation by use of different tools.

Advantages

The pipe cold cutting and beveling machine is designed in a compact way with aluminium alloy components, which give huge benefits to the enduser:

- Compact design for limited access on pipe and pipeline work
- Reduced weight for more ergonomic work
- Split frame technology for cold cut of endless metal pipes
- Designed for heavy wall pipes up to 80 mm WT

Developed with German universities our tool tip solutions for pipe cutting and beveling provide an outperforming result in pipe cutting technologies:

- High metal removal rate for cold cut and bevel
- More durable cutter, reduction of consumables
- Low cost of tool tips

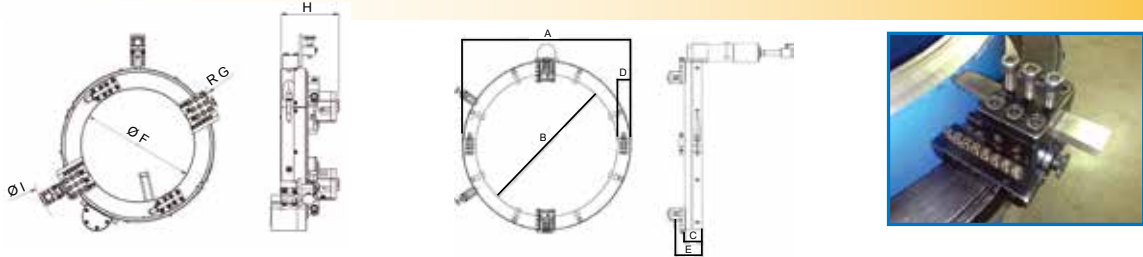
The drives of the clamshell pipe cold cutter are a basic component of the pipe cutting machine. All motors are west european standard. An adapter allows easy exchange of all motor types and sizes (pneumatic, hydraulic):

- Modular design
- Easy exchange on-site
- Reduced investment



TECHNICAL DATA

DLW pipe cold cutting machine



Type No.	A (mm)	B (mm)	C (mm)	D (mm)	E (mm)	F (mm)	G (mm)	H (mm)	I (mm)	weight (kg)	PIPE OD (mm)		max. WT (mm)
											min.	max.	
DLW 3-6	320	182	88,5	68	127	182	202	188	545	23	60,3	168,30	80
DLW 4-8	367	232	88,5	68	127	232	224	188	590	27	88,9	219,1	80
DLW 5-10	420	286	88,5	68	127	286	249	188	644	30	114,3	273,1	80
DLW 6-12	470	340	88,5	68	127	340	261	188	694	34	141,3	323,9	80
DLW 8-14	496	368	88,5	68	127	368	262	188	719	38	193,68	355,6	80
DLW 10-16	550	421	88,5	68	127	421	317	188	774	42	244,48	406,4	80
DLW 12-18	605	470	88,5	68	127	470	341	187	827	45	298,45	457,2	80
DLW 14-20	655	525	88,5	68	127	525	369	187	878	50	330,2	508	80
DLW 18-24	760	625	88,5	68	127	625	420	187	981	60	431,8	609,6	80
DLW 24-30	920	775	88,5	74	127	775	496	188	1143	83	584,6	762	80
DLW 30-36	1068	928	88,5	74	127	928	572	188	1294	93	736,6	914,4	80
DLW 36-43	1250	1105	88,5	74	136	1105	661	188	1472	105	889	1092,2	80
DLW 40-48	1420	1245	95	89	151	1245	731	194	1645	115	990,6	1219,2	80
Heavy Duty Version													
DLW-HD 53	1609,7	1371,6	158,8	119,1	215,9	-	-	-	-	314	1041,4	1346,2	100
DLW-HD 55	1660,5	1422,4	158,8	119,1	215,9	-	-	-	-	325	1092,2	1397,0	100
DLW-HD 57	1711,3	1473,2	158,8	119,1	215,9	-	-	-	-	333	1143	1447,8	100

other sizes on request, wall-thickness and pipe OD also depend on material and selected cutting tools

Operations & Options DLW Cold Cutter

Field of application :

- Radial pipe cold cutting
- Pipe beveling
- Simultaneous cutting & beveling
- Beveling both end in one operation
- Inside machining of pipe ends
- Flange facing
- Outside machining of weld seams

Options drive of pipe cold cutter:

- Hydraulic Motor (recommended), power 11.000 W
- Pneumatic Motor up to DLW 12" OD, power 1.700 W (air consumption: 2,69 m³/min)
- Pneumatic Motor up to DLW 57" OD, power 3.000 W (air consumption: 3,10 m³/min)
- Electrical Motor (max. WT=10 mm) on request

All metal materials of pipe and pipeline:

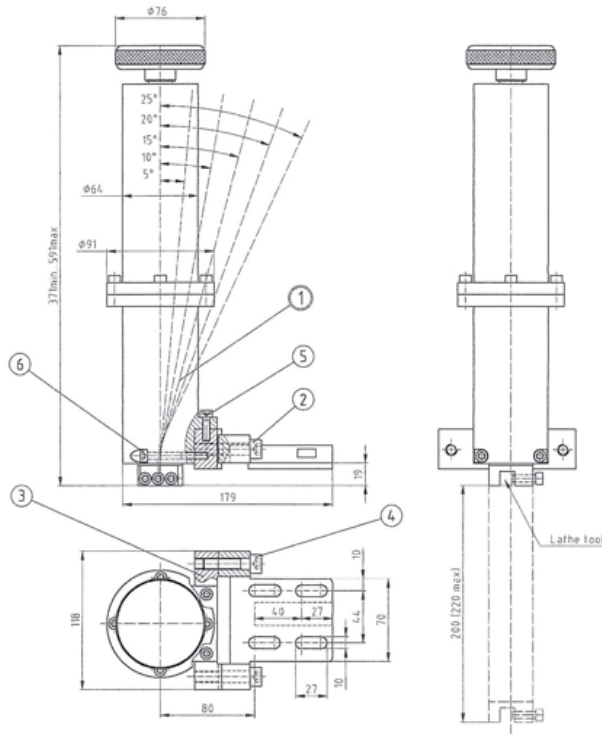
- Duplex
- Hastelloy
- Superduplex
- Stainless steel
- P91
- Carbon steel

SPECIAL EQUIPMENT

Inside Counterbore

DLW-CB:

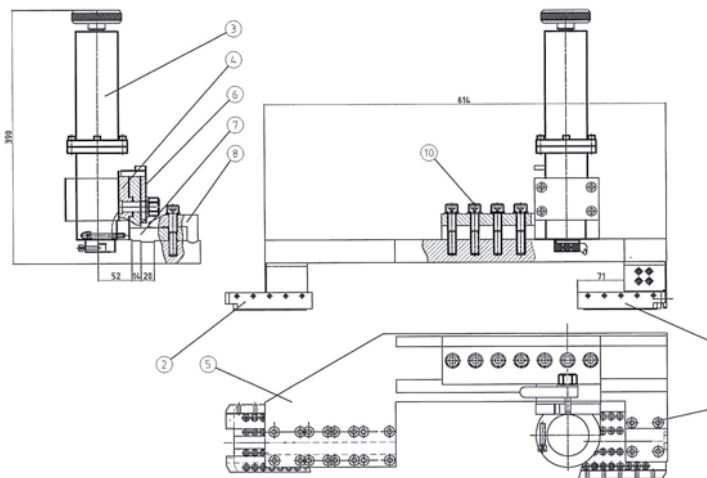
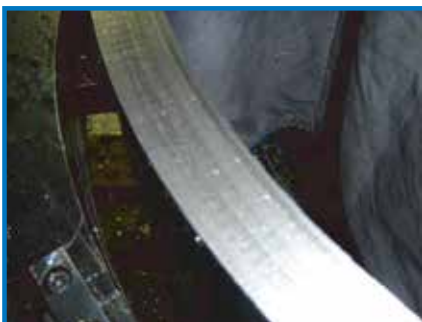
Internal beveling device for calibration of inside diameter and inside boring of max. 200 mm depth, adjustable 0° - 25°.



Flange Facing

DLW-FF:

Flange facing device for DLW machines to regroove the flange surface, automatic feed mechanism to be used together with DLW-CB.



SPECIAL EQUIPMENT

Outside turning module

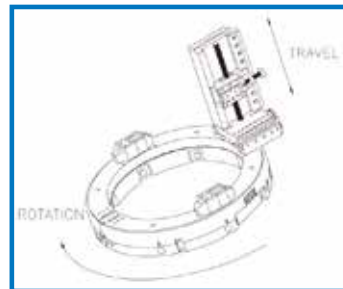
DLW-ETM

The external turning module DLW-ETM can be used for external machining of heavy wall steel pipes. External insulation of pipelines as well as overlapping weld seams can be removed.

Travel: 188mm

Feed depth: 25mm (50mm with two steps)

Feeding speed: 2mm / min



Spring Load Holder

DLW-SLH

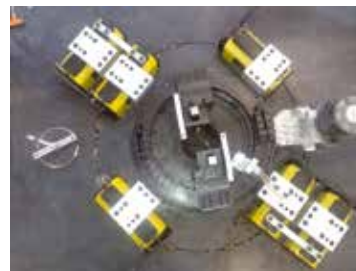
The spring load holder DLW-SLH is used for pipe cold cutting and fast beveling of out-of-round pipes. The spring load holder provides a perfect beveling result for this application.



Deck Cutter

Application:

By using strong magnets and a special tool holder all DLW machines from 12 – 48 " can be converted to a deck cutter. This is a portable machine which is able to cut big holes in heavy wall plates.



How to operate:

- Adjust the air motor pressure to lower setting for safety
- Adjust the feed rate as normally from the feed bracket knob
- After the cut is finished, cut-off piece will hang from the cut-off holder.
- After the cut is finished disengage magnets and lift up the complete system

APPLICATIONS AND OPTIONS

for DLW Pipe cold cutting machine



Twin motor for extreme applications



Removal of longitudinal weld seam



Special feet for thin wall pipes



DLW use on-site for gas pipeline contractors



High productivity at P91 pipe



High wall-thickness operations



Angle gear for limited access on pipes and pipelines