

4 CHOOSE YOUR TORQUE REACTION MANAGEMENT SYSTEM

TORQUE REACTION ARM

(simple or double)



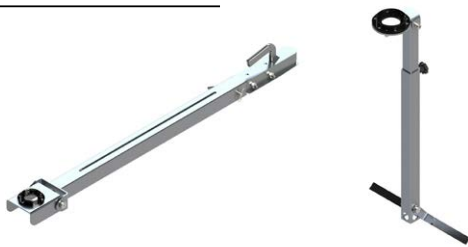
TELESCOPIC BIPOD



STAND FOR BURIED VALVES

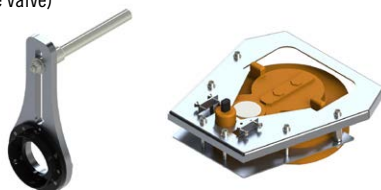


ARTICULATED REACTION ARMS



FIXED FLANGES

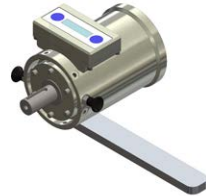
(to be installed on the valve)



5 CHOOSE YOUR OPTIONS AND ACCESSORIES

REVOLUTION COUNTER

Digital display
Two ways rev. counter +
cumul and speed.
Memory



TORQUE LIMITER

Mechanical torque
limiter, manual re-engage
Adjustable torque limit



EXTENSION BARS AND UNIVERSAL JOINT

200 / 400 / 600 mm
(7.9 / 15.7 / 23.6 in)

Telescopic « Tee-key » for buried
valves

Universal joints available



TRANSPORTATION AND STORAGE CASES

Protection case for
transport and storage
Convenient and sturdy
with foam prints inside



BATTERIES

Long-life battery
Backpack



«KIT BOX»

Complete and smart metal case
for professional use



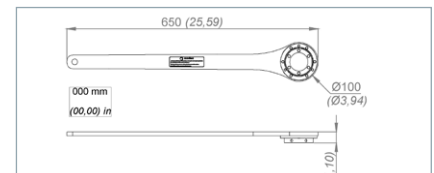
TORQUE REACTION MANAGEMENT SYSTEM

To guarantee operator **safety** and **comfort**, it's **essential** to use a **torque reaction management system**. Several types of system are available for use in different situations. Each is compatible with the whole range of actuators and adaptors because of their identical flange.

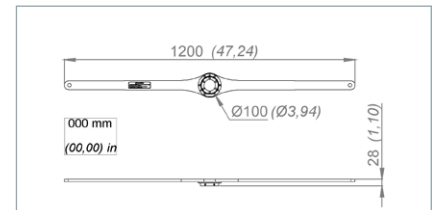
► SINGLE AND DOUBLE REACTION ARMS

Our actuators are supplied with a **torque reaction arm** which enables the torque to be controlled by a strap attached to the end of the bar and to a fixed point in the working environment. In this way, **the operator is not exposed to the torque reaction**, in particular at the end of the process.

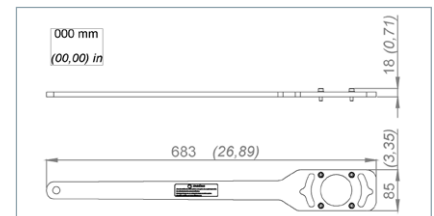
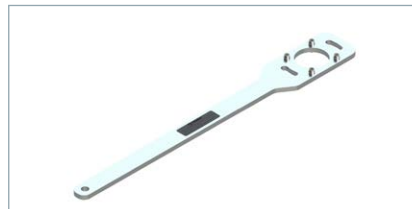
Reference	Weight kg (lb)	Max torque Nm (lb.ft)
BR001	1,0 (2,2)	900 (660)
BR002	1,6 (3,5)	900 (660)
BR003	0,8 (1,8)	900 (660)



BR001



BR002



BR003

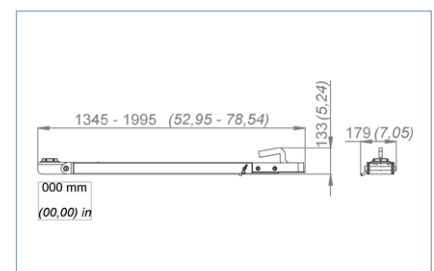
► ARTICULATED REACTION ARM FIXED TO VEHICLE TRAILER HATCH

This **telescopic metal bar** can be easily positioned between a vehicle's trailer hatch and the actuator. Ideal for **valves buried beneath roads**, or for any valve which has an upward facing handwheel.

Reference	Weight kg (lb)	Max torque Nm (lb.ft)
BA001	12.3 (27,1)	900 (660)



BA001



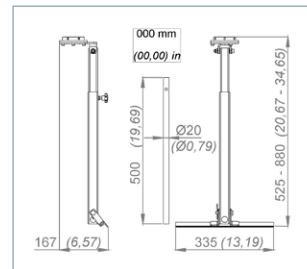
IMPORTANT

For your comfort and safety, please carefully read the instruction manual before using the portable valve actuator.

▶ FOOT HELD ARTICULATED REACTION ARM

You don't need to attach this torque reaction system to anything – By simply standing on the reaction arm, the operator doesn't need to carry the torque reaction with his arms, his own weight does the job !

Reference	Weight kg (lb)	Max torque Nm (lb.ft)
BA002	2.5 (5,5)	350 (260)



Example of use with a non accessible valve.



Example of use with a buried / underground valve.

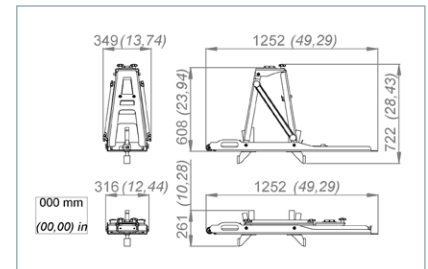
▶ STAND FOR UNDERGROUND / BURIED VALVES

Designed for underground water distribution system valves, this stand makes the actuator easy and safe to use with a telescopic «Tee-key». Light and pliable, it's simple to transport with the two wheels, takes up minimal space and **can be erected in a couple of minutes** using just a few knurled screws.

Reference	Weight kg (lb)	Max torque Nm (lb.ft)
SE001	13.5 (29,8)	350 (260)

Once in place, the stand – not the operator - bears the load of both the torque and the weight of the actuator.

It's the perfect tool for water distribution system operators.



IMPORTANT

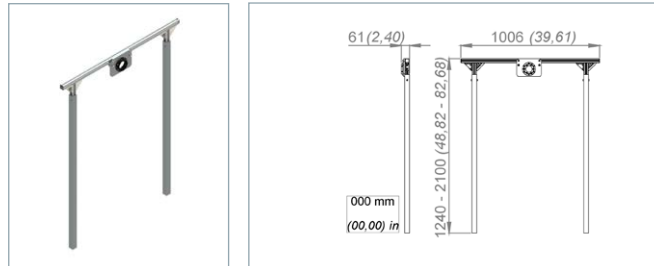
For your comfort and safety, please carefully read the instruction manual before using the portable valve actuator.

TELESCOPIC BIPOD

The bipod is **light, small, easy to use and practical**. It's adapted for use in a wide variety of situations.

With its two telescopic legs and a flange that can be placed in **any position**, it redirects the torque without any difficulty into the ground, a wall or any other fixed point.

Reference	Weight kg (lb)	Max torque Nm (lb.ft)
BP001	5.6 (12,3)	350 (260)



SPECIAL/ADAPTED TORQUE REACTION MANAGEMENT FLANGES

These flanges are designed to be used with a **specific valve or system**. Before using it, you need to equip the valve with a fixed system on to which the actuator can be placed. Some of them therefore require some **preliminary design** but thereafter the flange is perfectly adapted to both the system and application. This flange is particularly useful for valves and systems that do not have a hand-wheel and need activating regularly.

These flanges are **made to order** by our technical department based on the specific characteristics of your system.



Reference – made to order

IMPORTANT

For your comfort and safety, please carefully read the instruction manual before using the portable valve actuator.



ACCESSORIES

for pneumatic portable actuators 1/3

We have a range of accessories specifically for pneumatic portable actuators designed to improve user comfort as well as the protection of both operator and equipment.

AIR FILTRATION, PRESSURE REGULATION AND LUBRICATION UNITS

Pneumatic portable valve actuators (HL83) require **dry, clean** and **properly lubricated air** in order to work effectively. The FRL unit filters, dries and lubricates the compressed air, guaranteeing that the motor operates as required. It also controls the air supply pressure, which in turn controls the actuator's performance (maximum torque).

The FRL should be positioned **less than 5 metres away from the tool**. When selecting the FRL, check that it has a flow capacity suitable for the actuator's requirement.

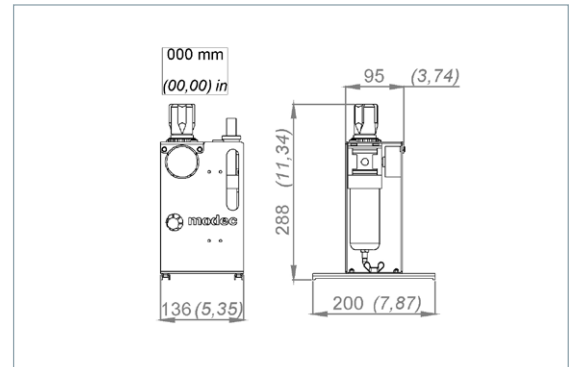
moddec offers a complete range of FRL units that are compact, robust, adapted to the constraints of work sites and easy to connect.

Actuator reference	FRL reference	Lubrication required
HL83E	AC106	2,5 drops/min
HL83S & HL83H	AC107	6 drops/min

Self-relieving regulator. Lubrication with selective oil fog. Metal bowl with oil level viewing window.

Recommended oil type : MODEC Co-16 oil (reference AC149).

Reference	AC106	AC107
Max inlet pressure (23°C / 50°C)	16 / 10 bars 232 / 145 psi	16 / 10 bars 232 / 145 psi
Pressure gauge	0 / 12 bars 0 / 174 psi	0 / 12 bars 0 / 174 psi
Controlled pressure	0,5 / 10 bars 7 / 145 psi	0,5 / 10 bars 7 / 145 psi
Ambient temperature	0 à +50°C 0 / 122°F	0 à +50°C 0 / 122°F
Oil bowl capacity	114 cm ³ 0,004 cfm	114 cm ³ 0,004 cfm
Filtration	25 µm	25 µm
Purge system	Auto	Auto
Connection	G ¼	G ½
Dimensions	288 x 136 x 95 x 200 mm 11,3 x 5,4 x 3,7 x 7,9 in	
Weight (empty)	3,1 kg / 6,8 lb	3,5 kg / 7,7 lb



IMPORTANT

For your comfort and safety, please carefully read the instruction manual before using the portable valve actuator.



ACCESSORIES

for pneumatic portable actuators 1/3

We have a range of accessories specifically for pneumatic portable actuators designed to improve user comfort as well as the protection of both operator and equipment.

SAFETY AIR TREATMENT BOX (SAT BOX)



The **SAT Box** (Safety Air Treatment box) is a **safety device** that protects the user and the equipment.

The **SAT Box** provides numerous important safety features:

- Emergency kill switch
- Key safety lock (optional)
- Downstream automatic air-bleed
- Automatic switch off when air pressure drop detected

Reference	AC118
FRL Type	AC107
Emergency kill switch	▶
Key safety lock	Option
Automatic downstream air bleed	▶
Pressure gauge	0 / 12 bars / 0 / 174 psi
Filtration	25 µm
Oil bowl capacity	114 cm ³ / 0,004 cfm
Connections	G3/4
Min & max inlet pressure	2 / 8 bars / 0 / 174 psi
Dimensions	300 x 231 x 204 mm 11,8 x 9,1 x 8 in
Weight (empty)	7.6 kg / 16,8 lb
Ambient temperature	0 / +50 °C / 0 / 122 °F

Those Safety devices ensure an instantaneous air bleed in the downstream circuit when the emergency kill switch is hit and/or when air supply stops. As a consequence, no residual energy may create an accidental motion after the stop. All these safety features are energized by air pressure, without any other source of energy required.

If the air feed pressure falls below 2 bars, the SAT box will automatically shut down in order to prevent the actuator inadvertently restarting if the pressure climbs back up (if the compressor stops and then restarts for example).

All of these functions are operational with the air supply pressure - there's no need for another energy source.

Finally, the SAT box integrates the FRL unit (Filtration, air pressure Regulation and Lubrication) in order to ensure that the air feed is clean and correctly lubricated.

Reference: AC118

EXHAUST COLLECTOR AND SILENCER

It is recommended to use a **silencer** with pneumatic portable actuators. It fixes to the actuator's exhaust vent and **reduces the sound level**. We have silencers of varying sizes and performance levels for different applications and constraints of use of the actuators.

> **Heavy duty exhaust silencers:** Extremely robust and compact, this stainless steel silencer reduces the noise level and protects against foreign bodies getting into the motor via the exhaust vent.

References: AC155 for Easy Duty actuators

AC156 for Standard Duty and Heavy Duty actuators

> **High flow exhaust silencer:** Constructed with a unique expansion chamber, completely free of obstruction, exhaust air softly flows to the atmosphere with significant noise and oil fog reduction, providing a clean comfortable productive work environment. Composed entirely of corrosion-resistant material for long life and maintenance-free performance, this model is especially recommended for Standard Duty and Heavy Duty actuators.

References: AC159 for Standard Duty and Heavy Duty actuators only

> **The exhaust collector** must be assembled on Standard duty and Heavy duty actuators radial exhaust to accommodate the silencer. For Easy duty actuators, the silencer can be directly fixed to the exhaust vent at the back of the motor.

IMPORTANT

For your comfort and safety, please carefully read the instruction manual before using the portable valve actuator.

ACCESSORIES

for transporting and storing portable actuators 3/3

To maintain optimum performance and durability, your pneumatic portable actuator needs to be stored in the right conditions. We have two types of box for storing and transporting actuators and their accessories.

As well as providing protection, these boxes are also ideal for transporting all the equipment to sites and minimising the risk of misplacing any parts.

► TRANSPORT CASES



Extremely robust, with wheels and handles, these transport and storage cases are **designed to order** so that all the equipment fits snugly into **a thick, pre-cut protective foam**.

Available in four exterior sizes, the cases are adapted to accommodate the required equipment by cutting the protective foam to measure.

Dimensions	VT001	VT002	VT003	VT004
Length mm (in)	1200 (47,2)	860 (33,9)	305 (12,0)	630 (24,8)
Height mm (in)	420 (16,5)	560 (22,0)	270 (10,6)	500 (19,7)
Width mm (in)	234 (9,2)	355 (14,0)	194 (7,6)	370 (14,6)

► «MODEC KIT BOX»



For **regular professional use**, the **modtec kit box** is a metal case that can hold all the equipment necessary for various operations (actuators, adaptors, torque management systems, batteries, chargers, FRL unit, air feed pipes etc). With the kit box, you can transport all the equipment to the work site **without difficulty** and **get started quickly and simply**.

The Kit box can be positioned vertically or horizontally and comes with 2x3 wheels so it can be easily moved around, even up and down stairs. The interior has compartments so the different parts can be stored easily and efficiently, and, more importantly, can be put together quickly.

In the case of a pneumatic actuator, for example, it can hold the FRL unit and an air feed pipe on a reel.

Once again, the **modtec kit box** can be modified to order and **adapted to your needs**.

References : VT005