

# ECO.32



See icon guide on cover flap



32mm



13mm



40mm



12



1000 W



1500



150mm



The ECO.32 has been the best selling magnetic drilling machine in recent years. The efficient basic model is equipped with an eager single speed motor.

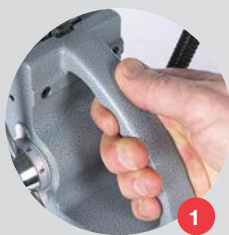


### Features

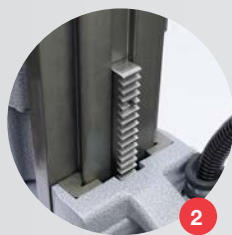
- Single speed gearbox
- Compact design
- Detachable spindle
- Practical long stroke
- Clear and easy controls

### Technical data

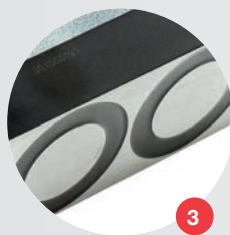
Annular cutters	Ø 12 - 32 mm
Twist drills	Ø 1 - 13 mm
Countersinking	Ø up to 40 mm
Length	320 mm
Width	210 mm
Height	370 - 512 mm
Stroke	150 mm
Weight	12 kg
Magnet (l x w x h)	160 x 80 x 42 mm
Magnetic force	1500 kg
Motor power	1000 W
Total power	1050 W
Speed (no load)	775 min <sup>-1</sup>
Speed (load 1000 W)	400 min <sup>-1</sup>
Spindle (Weldon)	3/4" (19,05 mm)
Voltage	110-120 / 220-240 V / 50-60 Hz



1



2



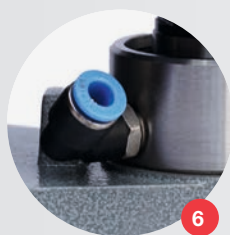
3



4



5



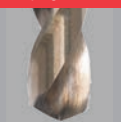
6

≤ Ø 32 mm  
page: 70

≤ Ø 13 mm  
page: 96

≤ Ø 40 mm  
page: 95

accessories  
page: 59



- 1 Ergonomic feed handle
- 2 High precision height adjustment:  
Low maintenance, minimal wear correction
- 3 Strong dual coil CNC machined magnet
- 4 Clear and easy controls
- 5 Detachable spindle
- 6 Integrated tool cooling

# ECO.32-T



See icon guide on cover flap



32mm



13mm



40mm



M12



12,6



1000 W



1500



150mm



min



The best  
all-round  
magdrill  
in it's range

Need to drill and tap a 32 mm hole at a great height? The ECO.32-T is designed to complete your tailor-made work at all workplaces.



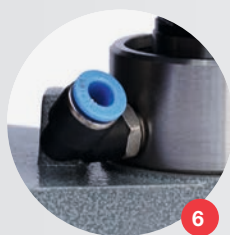
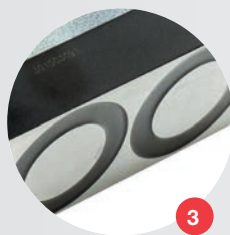
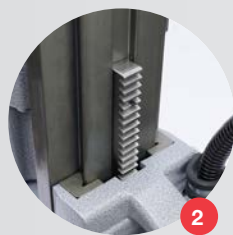


### Features

- Single speed gearbox
- Compact design
- Detachable spindle
- Practical long stroke
- Clear and easy controls
- Left & right rotating
- Electronically adjustable rotating speed

### Technical data

Annular cutters	Ø 12 - 32 mm
Twist drills	Ø 1 - 13 mm
Countersinking	Ø up to 40 mm
Threading	M3 - M12
Length	320 mm
Width	210 mm
Height	370 - 512 mm
Stroke	150 mm
Weight	12,6 kg
Magnet (l x w x h)	160 x 80 x 48 mm
Magnetic force	1500 kg
Motor power	1000 W
Total power	1050 W
Speed (no load)	100 - 600 min <sup>-1</sup>
Speed (load 1000 W)	225 min <sup>-1</sup>
Spindle (Weldon)	3/4" (19,05 mm)
Voltage	110-120 / 220-240 V / 50-60 Hz



- 1 Ergonomic feed handle
- 2 High precision height adjustment:  
Low maintenance, minimal wear correction
- 3 Strong dual coil CNC machined magnet
- 4 Clear and easy controls
- 5 Detachable spindle
- 6 Integrated tool cooling
- 7 Right / left rotating functionality
- 8 Electronic speed adjustment

≤ Ø 32 mm page: 70	≤ Ø 13 mm page: 96	≤ Ø 40 mm page: 95	≤ M12 page: 98	accessories page: 59