

ECO.50



See icon guide on cover flap



50mm



23mm



55mm



13,5



1250 W



1850



170mm



For maximum power without sacrificing mobility, the ECO.50 with Morse Taper 2 connection is what you need. For years the ECO.50 has been the "benchmark" machine among users.



Features

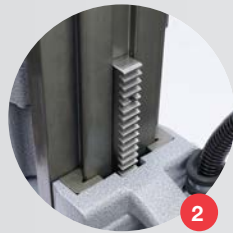
- 2-speed gearbox
- Morse Taper 2 spindle
- Practical long stroke

Technical data

Annular cutters	Ø 12 - 50 mm
Twist drills	Ø 1 - 23 mm
Countersinking	Ø up to 55 mm
Length	320 mm
Width	210 mm
Height	385 - 540 mm
Stroke	170 mm
Weight	13,5 kg
Magnet (l x w x h)	170 x 85 x 48 mm
Magnetic force	1850 kg
Motor power	1250 W
Total power	1375 W
Speed (no load)	(I) 380 min ⁻¹
	(II) 690 min ⁻¹
Speed (load 1000 W)	(I) 235 min ⁻¹
	(II) 425 min ⁻¹
Spindle (Weldon)	MT2 3/4" (19,05 mm)
Voltage	110-120 / 220-240 V / 50-60 Hz



1



2



3



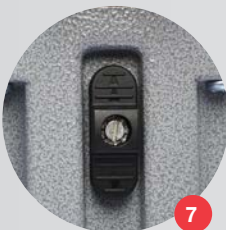
4



5



6



7

≤ Ø 50 mm
page: 70

≤ Ø 23 mm
page: 96

≤ Ø 55 mm
page: 95

accessories
page: 61



- 1 Ergonomic feed handle
- 2 High precision height adjustment:
Low maintenance, minimal wear correction
- 3 Strong dual coil CNC machined magnet
- 4 Clear and easy controls
- 5 Morse Taper 2 spindle
- 6 Integrated tool cooling
- 7 2-speed gearbox

ECO.50-T



See icon guide on cover flap



50mm



23mm



55mm



M20



14



1250 W



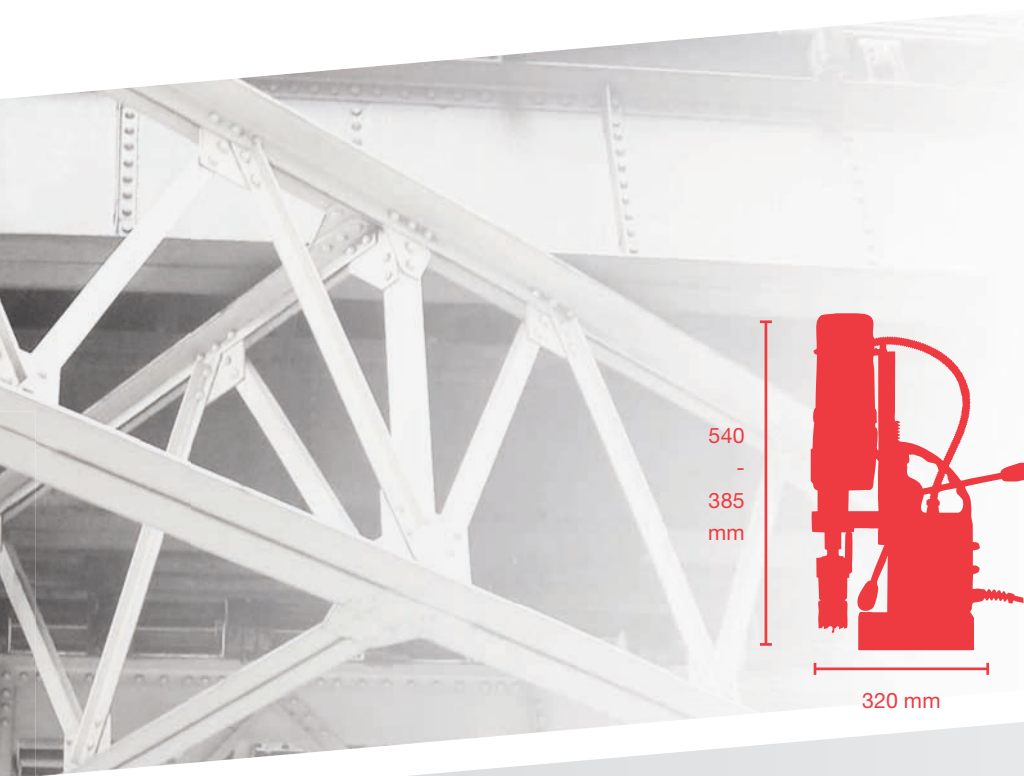
1850



170mm



For maximum power without sacrificing mobility, the ECO.50 with Morse Taper 2 connection is what you need. This machine has proven to be the benchmark among users for years!

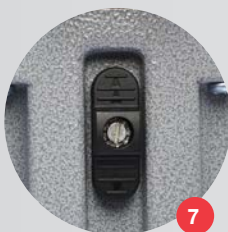
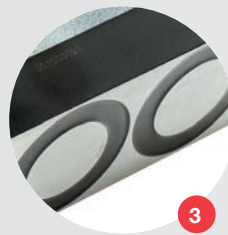
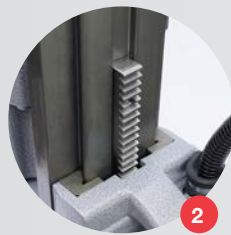


Features

- 2-speed gearbox
- Morse Taper 2 spindle
- Practical long stroke
- Electronically adjustable rotating speed
- Left & right rotation

Technical data

Annular cutters	Ø 12 - 50 mm
Twist drills	Ø 1 - 23 mm
Countersinking	Ø up to 55 mm
Threading	M3 - M20
Length	320 mm
Width	210 mm
Height	385 - 540 mm
Stroke	170 mm
Weight	14 kg
Magnet (l x w x h)	170 x 85 x 48 mm
Magnetic force	1850 kg
Motor power	1250 W
Total power	1375 W
Speed (no load)	(I) 100-280 min ⁻¹ (II) 185-530 min ⁻¹
Speed (load 1000 W)	(I) 250 min ⁻¹ (II) 460 min ⁻¹
Spindle (Weldon)	MT2 3/4" (19,05 mm)
Voltage	110-120 / 220-240 V / 50-60 Hz



- 1 Ergonomic feed handle
- 2 High precision height adjustment:
Low maintenance, minimal wear correction
- 3 Strong dual coil CNC machined magnet
- 4 Clear and easy controls
- 5 Morse Taper 2 spindle
- 6 Integrated tool cooling
- 7 2-speed gearbox switch
- 8 Right / left rotating functionality
- 9 Electronic speed adjustment

≤ Ø 50 mm
page: 70

≤ Ø 23 mm
page: 96

≤ Ø 55 mm
page: 95

≤ M20
page: 98

accessories
page: 59

